



● MONUMENT FND AS NOTED
● SET NOS REBAR & CAP

SCALE 1 INCH EQUALS 100 FEET

LAKE FOREST
DIVISION ONE
VOL. 18, PG. 5-6

LINE TABLE

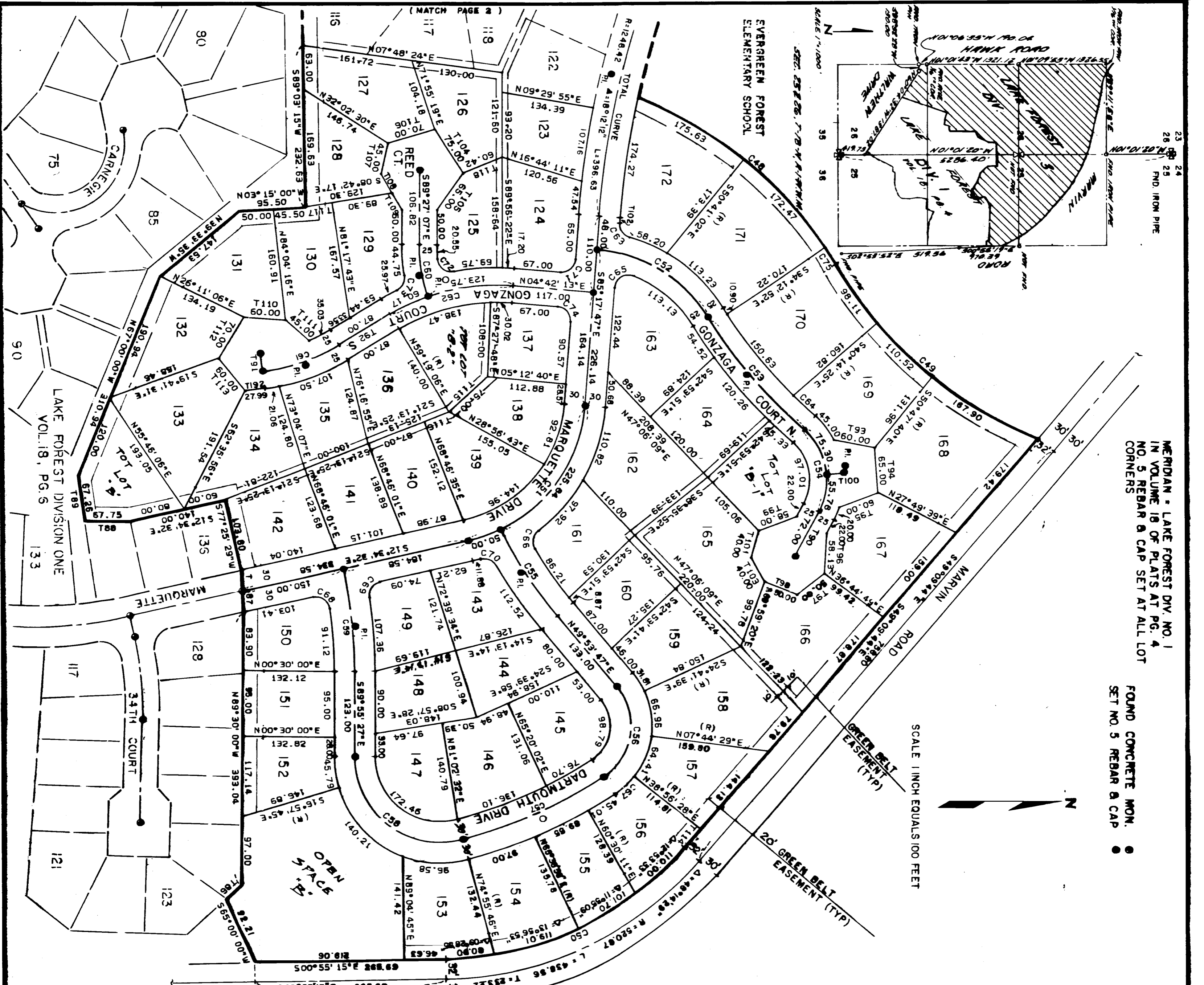
BEARING	DIST.	BEARING	DIST.
119 S89°03'15"W	35.00	153 N70°32'50"E	27.48
120 S04°14'53"W	20.00	154 N70°32'50"E	20.00
121 S28°21'01"W	60.00	155 S71°56'13"E	45.50
122 S22°54'23"W	125.00	156 S20°48'46"E	50.00
123 N89°58'22"E	73.00	157 N01°52'06"W	48.00
124 S17°51'31"E	30.00	158 S59°42'40"E	48.00
125 N12°30'00"E	30.00	159 N12°08'29"E	50.00
126 N12°30'00"E	25.00	160 N08°58'31"E	30.00
127 N88°53'24"E	35.00	161 S77°51'29"E	51.91
128 S39°14'29"E	30.00	162 N77°42'29"W	18.98
129 S01°00'57"W	30.00	163 N65°36'16"E	40.00
130 S59°52'21"E	50.00	164 N11°16'50"E	63.88
131 S77°42'25"E	20.00	165 N24°54'40"W	42.04
132 N12°17'35"E	20.00	166 N24°54'40"W	42.04
133 N03°38'44"W	45.00	167 N88°23'27"E	53.00
134 S22°34'33"W	20.00	168 N23°45'21"E	49.56
135 N51°48'08"E	40.00	169 S89°37'03"E	73.00
136 N68°44'53"E	40.00	170 S10°23'18"E	80.00
137 N68°44'53"E	40.00	171 S39°55'17"E	65.00
138 S01°06'36"E	31.36	172 N39°58'43"E	40.00
139 S39°37'55"E	40.00	173 S12°12'44"E	50.33
140 S42°06'02"E	28.00	174 S22°41'22"E	35.00
141 S42°06'02"E	37.00	175 N55°45'50"E	55.66
142 S76°18'36"E	30.97	176 N21°41'08"E	42.27
143 N45°45'31"E	40.00	177 N88°58'17"E	40.00
144 S41°14'10"E	65.00	178 N13°15'37"E	63.01
145 S82°30'00"W	18.87	179 N49°43'56"E	80.00
146 N88°53'24"E	33.00	180 S25°39'38"E	37.89
147 N48°23'03"E	53.00	181 N66°17'16"E	71.54
148 S69°48'59"E	50.00	182 N39°32'03"E	31.85
149 S22°42'46"E	55.00	183 S79°54'44"E	43.00
150 N59°21'02"E	45.00	184 N49°43'23"E	30.00
151 N18°35'36"E	45.00	185 N21°28'58"E	35.99
152 N02°34'24"W	58.01	186 S51°45'37"E	50.00
		187 N00°10'57"E	29.81
		188 N00°36'43"E	20.00
		189 N39°38'43"E	20.00
		191 N23°45'21"E	49.86

CURVE TABLE

CH. BEARING	CHORD	DELTA	RADIUS	LENGTH	TANGENT
76 S26°19'33"E	124.28	50°55'41"	145.38	128.38	68.71
77 N26°11'48"W	127.31	77°23'36"	149.80	120.00	120.00
78 N23°21'41"W	426.69	83°03'51"	486.43	253.00	253.00
79 N43°53'28"E	101.19	90°00'01"	71.55	112.39	71.55
80 N69°18'48"E	296.16	40°49'15"	444.05	158.23	158.23
81 N77°07'21"E	225.00	40°49'42"	323.29	150.00	150.00
82 S68°47'23"E	187.70	17°50'04"	605.47	95.00	95.00
83 S52°00'27"W	24.65	6°48'08"	20.00	20.74	20.74
84 S67°55'07"W	41.40	5°48'32"	34.00	41.64	41.64
85 S46°08'00"E	28.80	92°06'32"	20.00	32.13	20.75
86 S11°47'44"W	25.13	89°21'11"	20.00	32.13	20.75
87 S41°34'19"W	35.38	77°50'32"	96.55	35.58	17.99
88 S85°45'33"E	25.13	5°30'44"	51.77	27.17	16.94
89 S62°08'12"E	33.83	20°58'28"	115.36	42.24	24.85
90 N41°08'10"W	42.00	102°21'17"	31.16	25.88	15.11
91 N67°10'23"E	24.11	74°08'59"	20.00	25.88	20.00
92 N24°34'28"W	28.20	90°00'00"	20.00	29.91	20.00
93 N57°30'00"E	27.20	85°41'40"	20.00	29.91	18.55
94 N34°39'08"W	37.14	11°51'21"	179.80	37.21	18.57
95 N64°40'19"W	31.58	104°03'55"	20.00	36.34	25.84
97 S29°59'51"E	27.08	85°14'18"	20.00	29.75	18.80

LAKE FOREST

DIVISION THREE



MERIDIAN - LAKE FOREST DIV. NO. 1
 IN VOLUME 18 OF PLATS AT PG. 4
 NO. 5 REBAR & CAP SET AT ALL LOT
 CORNERS

FOUND CONCRETE MON. ●
 SET NO. 5 REBAR & CAP ○

SCALE 1 INCH EQUALS 100 FEET



LAKES FOREST

DIVISION THREE

100101015 VOL 23 PG 51

CURVE TABLE

CH. BEARING	CHORD	DELTA	RADIUS	LENGTH	TANGENT
48 N 40° 50' 12" E	375.63	36° 35' 01"	500.00	383.10	198.36
49 S 87° 02' 14" E	374.63	39° 07' 28"	500.00	381.00	197.17
50 S 20° 02' 30" E	399.58	44° 14' 29"	400.00	411.81	216.88
51 S 48° 58' 09" E	257.69	72° 43' 15"	204.75	194.04	105.00
52 N 31° 51' 10" E	544.17	54° 17' 54"	500.00	504.00	257.00
53 N 29° 57' 39" E	186.96	18° 04' 58"	672.45	212.32	107.00
54 N 79° 57' 31" E	121.17	78° 04' 58"	98.15	131.05	78.00
55 N 57° 04' 11" E	148.83	14° 20' 45"	595.94	159.52	78.00
56 S 61° 32' 26" E	132.36	97° 07' 46"	88.28	159.52	100.00
57 S 24° 01' 27" E	221.27	17° 54' 25"	710.88	222.18	112.00
58 S 37° 30' 09" W	196.91	105° 08' 47"	123.98	227.52	162.00
59 N 83° 45' 00" E	149.09	12° 39' 05"	625.56	159.39	75.00
60 N 80° 43' 16" E	75.25	19° 39' 14"	289.04	75.62	38.18
61 N 18° 57' 11" W	117.49	23° 27' 27"	297.81	118.32	60.00
62 N 12° 59' 21" W	25.30	35° 23' 07"	20.00	183.92	95.00
63 N 55° 28' 40" E	42.81	78° 27' 05"	647.45	42.81	16.33
64 N 42° 48' 40" E	32.41	108° 14' 20"	20.00	29.15	17.86
65 S 31° 10' 36" E	26.54	83° 32' 10"	118.28	37.33	18.82
66 S 78° 42' 33" E	37.17	18° 04' 38"	20.00	31.01	21.57
67 S 42° 01' 04" E	29.39	94° 34' 38"	20.00	30.04	18.87
68 S 34° 42' 48" W	27.29	86° 03' 15"	20.00	26.95	15.49
69 N 53° 36' 09" W	27.29	75° 31' 25"	20.00	31.01	21.57
70 S 22° 26' 01" W	24.30	90° 00' 00"	20.00	20.00	20.00
71 S 50° 17' 52" W	28.12	95° 15' 12"	20.00	25.77	18.92
72 S 58° 53' 09" E	24.02	73° 49' 35"	20.00	21.62	15.00
73 S 52° 59' 09" E	28.12	90° 00' 00"	20.00	20.00	20.00
74 N 49° 42' 13" E	35.00	3° 20' 34"	600.00	35.01	17.51

LINE TABLE

BEARING	DIST.
85 N 43° 00' 00" W	30.00
87 S 87° 39' 04" W	60.97
88 S 00° 00' 00" W	67.75
89 S 81° 44' 53" W	67.25
90 S 61° 00' 10" E	72.00
91 N 82° 45' 32" E	25.00
92 S 90° 40' 54" E	57.00
93 N 11° 05' 53" E	50.00
94 N 68° 09' 23" E	83.00
95 S 29° 08' 06" E	80.00
96 S 86° 24' 17" E	58.13
97 S 36° 59' 37" E	50.00
98 N 21° 48' 56" E	58.00
99 S 20° 16' 47" E	25.00
100 N 04° 13' 39" W	40.00
101 S 74° 10' 29" E	8.06
102 N 85° 16' 05" W	40.00
103 N 61° 34' 01" E	75.00
104 N 57° 32' 01" E	65.00
105 S 54° 32' 20" E	70.00
106 S 16° 27' 35" E	45.00
107 S 76° 57' 51" E	32.74
108 N 59° 58' 48" E	27.25
109 N 59° 58' 48" E	45.00
110 N 03° 51' 50" E	50.00
111 N 41° 38' 32" E	70.00
112 S 58° 31' 58" E	60.00
113 N 50° 31' 58" E	75.00
114 S 49° 09' 44" E	17.82
115 S 42° 25' 05" E	38.13
116 S 21° 13' 23" E	40.00
117 S 08° 42' 17" E	60.42
118 S 22° 19' 08" E	27.99
119 S 07° 13' 27" E	27.99



LAKES FOREST

DIVISION THREE

CURVE TABLE

CH. BEARING	CHORD	DELTA	RADIUS	LENGTH	TANGENT
1 N89°30'00"E	110.81	0°56'49"	866.62	110.83	95.44
2 S77°44'00"E	287.89	1°56'13"	1456.13	287.89	258.22
3 S72°05'50"E	212.56	1°00'29"	1218.42	212.56	185.69
4 N08°38'24"W	91.98	6°46'07"	778.36	91.98	46.07
5 N25°53'04"W	235.30	2°42'54"	491.21	235.30	121.18
6 N03°48'09"E	341.87	87°05'19"	248.12	377.14	235.82
7 N28°04'38"E	254.87	38°32'21"	385.15	254.87	132.00
8 N15°24'07"E	162.94	33°08'00"	285.73	162.94	83.00
9 N52°23'17"E	108.49	65°50'38"	98.43	116.80	64.99
10 S23°05'54"E	151.16	81°48'42"	113.02	150.00	100.00
11 S22°39'38"E	153.15	43°09'07"	43.09	153.15	83.17
12 S22°39'38"E	302.18	100°21'31"	166.72	344.57	235.94
13 S13°59'38"E	207.89	17°48'05"	671.86	207.89	185.04
14 S03°15'51"E	307.06	15°48'05"	1116.93	308.04	155.00
15 N17°45'50"E	422.29	10°17'10"	2355.40	422.87	212.00
16 N48°28'51"W	29.14	93°32'32"	20.00	32.65	21.28
17 N37°58'31"E	29.14	93°32'32"	20.00	32.65	21.28
18 N09°42'29"E	42.22	3°13'57"	748.36	42.22	21.12
19 N09°42'29"E	20.37	0°41'48"	278.12	20.37	10.19
20 N13°08'29"E	20.72	7°12'54"	278.12	20.72	10.36
21 N43°44'21"E	29.24	5°17'54"	316.49	29.24	14.64
22 N31°22'05"E	117.34	21°21'57"	316.49	117.34	59.70
23 N31°22'05"E	31.05	101°52'40"	101.52	31.05	23.77
24 N30°15'12"W	46.68	21°47'28"	123.49	46.68	23.77
25 N37°58'31"E	28.24	90°00'00"	20.00	28.24	20.00
26 N39°48'27"E	70.72	90°00'00"	20.00	70.72	20.00
27 S53°08'08"E	70.72	90°00'00"	20.00	70.72	20.00
28 S32°08'54"E	8.18	81°48'42"	8.18	8.18	7.83
29 S78°23'18"E	23.99	73°42'33"	20.00	23.99	14.99
30 N27°54'09"E	23.99	73°42'33"	20.00	23.99	14.99
31 N43°18'38"E	63.67	81°04'22"	485.49	63.67	32.92
32 N33°02'37"E	101.25	12°27'40"	485.49	101.25	50.93
33 N33°02'37"E	25.76	80°10'58"	20.00	25.76	16.84
34 N50°29'57"E	28.98	89°12'51"	20.00	28.98	19.73
35 N40°31'46"W	28.98	92°50'42"	20.00	28.98	32.41
36 N51°52'32"E	20.00	1°00'13"	1141.93	20.00	10.00
37 S78°10'46"E	28.77	91°58'02"	20.00	28.77	20.70
38 N51°52'32"E	28.48	90°47'26"	20.00	28.48	20.26
39 S39°30'04"E	28.48	91°34'44"	20.00	28.48	20.26
40 N60°24'09"E	28.45	91°34'44"	20.00	28.45	20.26
41 S28°17'13"E	28.45	91°14'24"	20.00	28.45	20.22
42 N67°17'13"E	28.45	91°14'24"	20.00	28.45	20.22
43 S68°01'27"E	41.55	1°51'45"	1278.42	41.55	31.85
44 N58°59'07"E	29.10	93°20'17"	20.00	29.10	20.70
45 N58°59'07"E	27.99	84°40'25"	20.00	27.99	14.10
46 N58°59'07"E	27.99	84°40'25"	20.00	27.99	14.10
47 N58°59'07"E	43.55	31°53'21"	84.40	43.55	18.10
48 N48°12'30"W	117.10	9°09'18"	60.00	117.10	21.79

LINE TABLE

BEARING	DIST.	BEARING	DIST.
1 N88°50'07"E	20.00	43 S07°11'59"E	68.00
2 N13°07'35"W	50.00	44 S15°20'25"E	80.00
3 N08°48'27"E	120.47	45 S85°06'45"E	63.00
4 N08°30'07"E	22.50	46 N26°15'08"E	55.84
5 N01°09'53"W	25.00	47 N08°48'27"E	40.00
6 N01°09'53"W	80.00	48 N64°48'25"E	37.53
7 S52°12'42"E	20.00	49 S54°28'13"E	59.00
8 S25°14'35"E	30.00	50 S55°42'10"E	70.00
9 S01°11'33"E	30.00	51 N65°00'03"E	75.00
10 S64°53'37"E	30.00	52 N47°20'49"E	40.00
11 S18°24'44"E	30.00	53 S26°37'04"E	50.00
12 N88°50'07"E	25.00	54 S67°08'33"E	24.36
13 N14°38'12"E	25.00	55 N05°08'44"E	40.00
14 N11°14'20"E	25.00	56 N05°08'44"E	45.00
15 N16°11'31"E	40.60	57 N88°27'53"E	70.00
16 S46°09'53"E	40.60	58 S05°50'21"E	48.50
17 N86°05'30"E	40.00	59 N23°59'23"E	68.50
18 S89°39'08"E	40.00	60 S79°11'44"E	48.50
19 S50°04'02"E	43.00	61 S18°12'13"E	41.22
20 N53°04'39"E	47.50	62 N14°38'12"E	41.22
21 N88°06'43"E	50.00	63 S79°21'48"E	41.22
22		64 S108°41'25"E	41.22
23		65 S79°34'25"E	45.00
24		66 N49°43'23"E	50.00
25		67 N15°23'15"E	47.00
26		68 S59°16'57"E	30.00
27		69 S39°00'27"E	60.00
28 S52°12'42"E	41.30	70 S12°37'18"W	47.40
29 S20°07'20"E	59.00	71 S79°11'04"E	40.00
30 N01°09'53"W	30.00	72 N14°38'10"E	50.12
31 S68°01'27"E	40.00	73 N15°48'28"E	50.00
32		74 S89°29'33"E	50.00
33 S68°01'27"E	41.46	75 S75°59'47"E	83.56
34 N50°39'40"E	45.00	76 N88°50'07"E	35.00
35		77 S01°12'12"E	30.58
36 N87°28'12"E	40.00	78 S39°44'06"E	40.00
37 S45°21'20"E	40.00	79 S63°34'46"E	40.00
38 N08°48'27"E	56.48	80 N39°15'55"E	42.00
39 N08°48'27"E	66.68	81 S77°35'07"E	91.00
40 N50°18'17"E	50.00	82 N10°38'25"E	76.88
41 S75°25'07"E	30.00	83 N21°28'58"E	35.98
42 S75°25'07"E	30.00	84 N07°48'24"E	40.00
		85 S89°56'19"E	28.50